

# SRP-350plusV

3-inch Thermal POS Printer



Retail



Restaurants  
& Bars

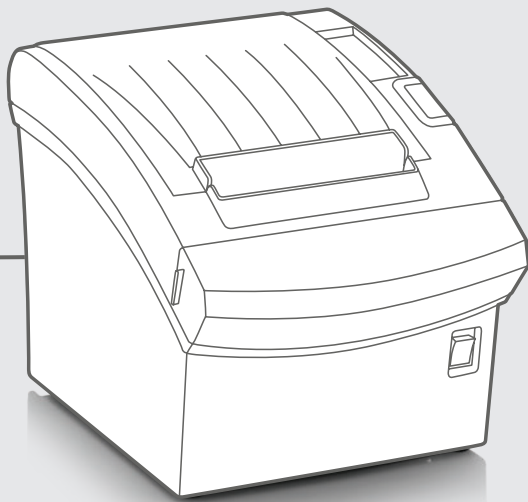


Lottery



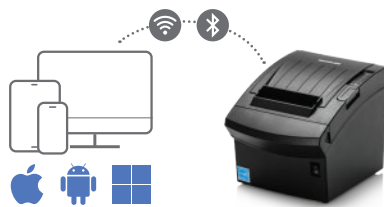
Hypermarket

# Industry Leading Printing Solution



### High-Quality Printing Performance

- Fast printing up to 400 mm/sec
- 16-shade grey scale printing of graphics
- Part of the world-class SRP-350 line
- Paper save mode supported



### World-Class Flexibility

- Built-in USB and Ethernet
- Optional Serial, Parallel, WLAN, Bluetooth®, and Powered USB
- Compatible with major operating systems including iOS™, Android™, and Windows®
- SoftAP(Captive Portal), Simple Wi-Fi set up to a mobile device



### User-Friendly Design

- Supporting a Visibility Intelligence™ function for optimal print quality on Blue4est® paper
- Special designed for anti-jam guide
- Optional diverse printer accessories and B-melodist
- 180 dpi, 203 dpi options

# SRP-350plusV

## 3-inch Thermal POS Printer

### Specifications

#### Print Characteristics

**Print Method**

Direct Thermal

**Print Speed**

SRP-350plusV: Up to 400 mm/sec  
SRP-352plusV: Up to 370 mm/sec

**Print Resolution**

SRP-350plusV: 180 dpi  
SRP-352plusV: 203 dpi

**Print Width**

Up to 72 mm

**Sensor**

Paper End, Paper Near End, Cover Open, Visibility Intelligence Sensor

#### Media Characteristics

**Media Type**

Receipt

**Media Width**

80 mm  
Optional 58 mm

**Media Roll Diameter**

Up to 83 mm

**Media Thickness**

0.05 ~ 0.08 mm

**Supply Method**

Easy Paper Loading

#### Physical Characteristics

**Dimensions (W x D x H)**

145 x 200 x 146 mm  
(5.70 x 7.87 x 5.74 inch)

**Weight**

1.6 kg (3.52 lbs.)

**Electrical**

EnergyStar Certified,  
External Power Adaptor 100-240 V AV, 50/60 Hz

**Drawer Port**

2 ports (Via y-type adaptor)

#### Performance Characteristics

**Memory**

64 Mb SDRAM, 64 Mb Flash

**NV Image Memory**

768 Kbytes (Mono)

**Receive Buffer**

4 Kbytes

**User Define Buffer**

12 Kbytes

**Interface**

Standard: USB V2.0 FS + Ethernet

Optional:

- ① USB V2.0 FS + Ethernet + Serial
- ② USB V2.0 FS + Ethernet + Dual Serial
- ③ USB V2.0 FS + Ethernet + Parallel
- ④ USB V2.0 FS + Ethernet + WLAN<sup>1</sup>
- ⑤ USB V2.0 FS + Ethernet + Bluetooth
- ⑥ USB V2.0 FS + Ethernet + Powered USB

WLAN: 802.11a/b/g/n  
(Infrastructure, Ad-hoc, Wi-Fi Direct, SoftAP)  
WEP40/104, WPA1/2 (PSK, EAP)

#### Environment Characteristics

**Temperature**

Operating: 0 ~ 40 °C (32 ~ 104 °F)  
Storage: -20 ~ 60 °C (-4 ~ 140 °F)

**Humidity**

Operating: 10 ~ 80 % RH  
Storage: 10 ~ 90 % RH

#### Software

**Emulation**

BXL / POS

**Driver / Utility**

Windows Driver  
OPOS/JPOS Driver  
Linux/Mac CUPS Driver  
Virtual COM USB/Ethernet Driver  
Utility Program  
Network Auto Installer

**SDK / Plugin**

Android/iOS/Windows SDK  
Linux SDK  
Xamarin SDK  
Web Print SDK  
Cordova Plugin

**Application**

mPrint App (Android, iOS)

**MDM (Optional)**

BIXOLON Profile Manager  
- XPM™, XCM™ (Windows, Android)

#### Fonts / Graphics / Symbologies

**Character Size**

Font A: 12 x 24, Font B: 9 x 17, Font C: 9 x 24,  
KOR, CHN, JPN: 24 x 24

**Characters Per Line**

SRP-350plusV: Font A: 42, Font B, C: 56,  
KOR, CHN, JPN: 21

SRP-352plusV: Font A: 48 Font B, C: 64  
KOR, CHN, JPN: 24

**Character Sets**

Alphanumeric: 95  
Extended Graphics: 128 x 35 page  
International: 32

**Graphics**

Supporting user-defined fonts, graphics,  
formats, and logos

**Barcode Symbologies**

1D: Coda Bar, Code 39, Code 93, Code 128,  
EAN-8, EAN-13, ITF, UPC-A, UPC-E

2D: Data Matrix, PDF417, QR code

#### Accessories

**Standard**

RJ12 6pin cable Adapter (Male to Female),  
USB A-B Cable 1.8 m

**Optional**

Built-in SMPS, Vertical stand, Wall mount,  
Splash Proof Cover, External buzzer, B-Melodist,  
Powered USB (0.5/1.2 m),  
Serial Cable (9-9/25-9 pin), Parallel Cable

