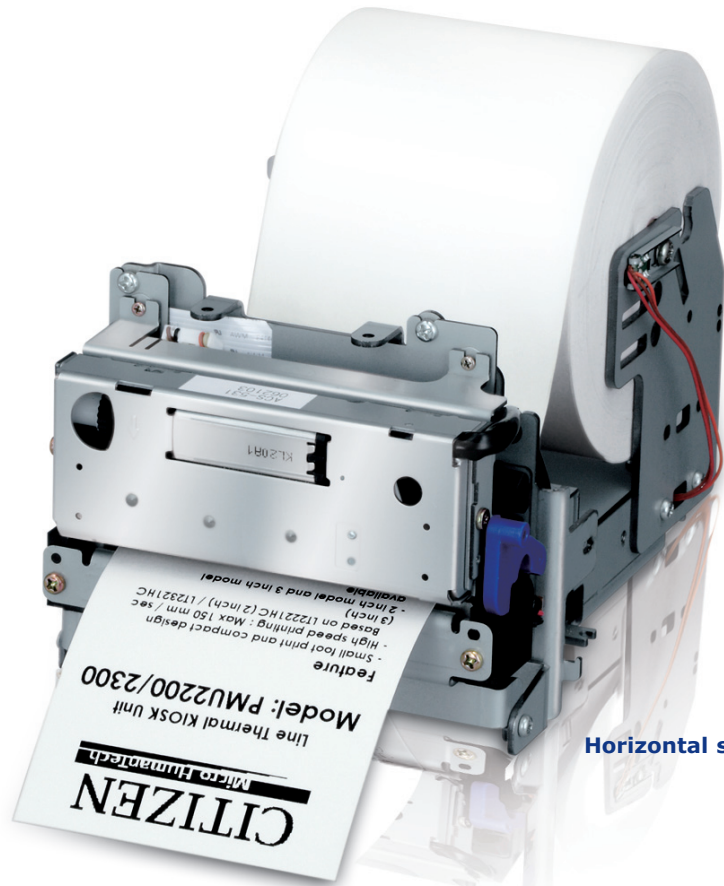


# CITIZEN

Micro HumanTech

## 28 varieties The flexible kiosk printer

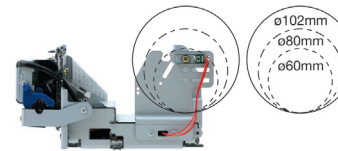


Horizontal solution

### Most Flexible

The unique PMU2200/2300 series offers 28 different varieties to install the paper. This makes it the most flexible kiosk printer in the market. Ready for installation without customisation.

### 3 Different Paper Roll Sizes



The PMU2200/2300 can be operated with 3 different paper roll sizes.

### Wide Operating Temperature

Operating in temperatures between -20°C up to 60°C the PMU2200/2300 is suitable for indoor as well as for outdoor applications.

## PMU2200II/2300II

POS

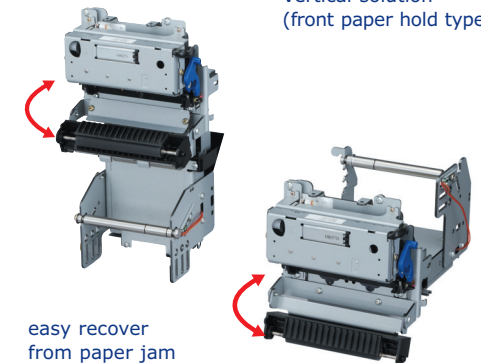
### Applications

- Kiosk
- Weigh scales
- POS
- Industrial machine
- ATM



Vertical solution  
(back paper hold type)

Vertical solution  
(front paper hold type)

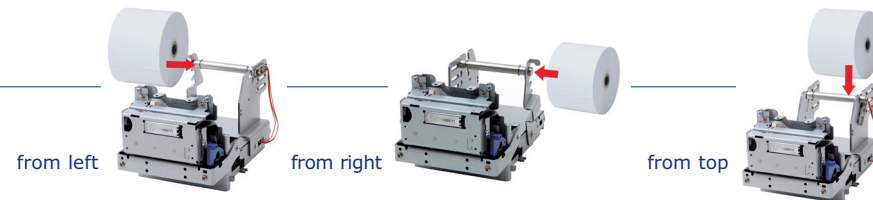


easy recover  
from paper jam

# CITIZEN

Micro HumanTech

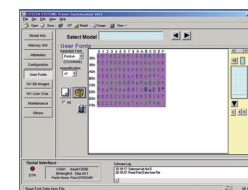
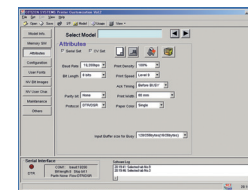
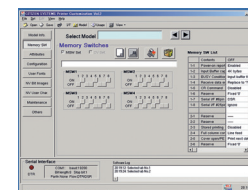
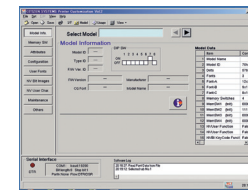
## Paper insert



## Specifications

Model	PMU2200	PMU2300
Printing method	Line thermal dot printing	
Paper width	58mm	80mm
Dot pitch	8 dots/mm (203 dpi)	
Printing speed	Max. 150mm/sec (1,200 dot lines/sec)	
Number of columns	Font A: 36 columns Font B: 48 columns Font C: 54 columns Kanji Font A: 18 columns Kanji Font C: 27 columns	Font A: 48 columns Font B: 64 columns Font C: 72 columns Kanji Font A: 24 columns Kanji Font C: 36 columns
Character size (WxH)	Font A: 1.50 x 3.00mm (12 x 24 dots) Font B: 1.13 x 3.00mm (9 x 24 dots) / Font C: 1.00 x 2.00mm (8 x 16 dots) Kanji Font A: 3.00 x 3.00mm (24 x 24 dots) / Kanji Font C: 2.00 x 2.00mm (16 x 16 dots) (As the space inside character font is included, actual character is smaller than that in the above table)	
Character table	Alphanumeric, International character set (12 characters x 16 countries) Code page 437, 850, 852, 857, 858, 860, 863, 864, 865, 866 WPC1252, Katakana, Thai Code 18, Kanji (JIS Level 1, Level 2), Kana, JIS C 6226-1983	
User memory	256 K bytes (User-defined characters and created logo can be registered.)	
Barcode type	UPC-A/E, JAN(EAN), 13 columns/8 columns, ITF, Code39, Code128, CODABAR, Code93	
Logo registration/print	Capable of registering user-defined characters print and logos into flash memory	
Line spacing	4.23mm (1/6 inch); can be set by a command	
Paper Width	58mm	58mm, 60mm, 80mm
Thickness	PMU2xxx: 0.065 – 0.105mm, PMU2xxxA: 0.110 – 0.150mm	
Recommended paper	TF-50KS-E-2D, TF62KS-E (Nippon Paper Industries)	
Interface	Serial (RS-232C compliant), Parallel (IEEE12184 compliant) or USB	
Input buffer	4K bytes or 45K bytes	
Sensors	Paper near end sensor, Platen open sensor / Paper near end sensor (adjustable) (Photo interrupter): Option / Black mark sensor (Photo interrupter): Option	
Input power	Input voltage: DC 24V± 7% / Current consumption: 1.9A (peak 6A) * Option: AC adapter 35AD1 or equivalent	
Power consumption	100W	
Weight	1.0kg	1.1kg
Dimensions (WxDxH)	101x179x96mm	118x179x96mm
Operating environment	-20°C ~ 60°C, 35 ~ 85%RH	
Storage environment	-25°C ~ 65°C, 10 ~ 90%RH	
Reliability	Thermal head: 100,000,000 pulses or 100 km / Auto cutter: 1,00,000 cuts	
EMC and safety standards	UL, C-UL, FCC class A, TUV, GS, CE marking	

## Customization Software



## Features



- Small foot print and compact design
- 150mm/sec high-speed printing
- 2 inch model (PMU2200) and 3 inch model (PMU2300) available
- Cutter (full/partial)
- Wider operation temperature range -20°C ~ 60°C
- Easy recovery from paper jam and easy head cleaning owing to removable head design
- Serial/Parallel/USB/ types available
- 8 dots/mm resolution
- Wide variety of paper holding style 28 patterns for 60/80/102mm diameter paper roll support
- Paper thickness up to 0.150mm (Option)
- Driver: Win 2000/XP/VISTA/ 2003 Server

## Type Classification

PMU 2 2 0 0 -RS U P -8 L 2  
1) 2) 3) 4) 5) 6) 7) 8) 9) 10)

- 1) Mechanism mounted**  
2: LT-2221 (2-in. mechanism)  
3: LT-2321 (3-in. mechanism)
- 2) Paper width**  
0: 58mm (with 2-in. mechanism/80mm (with 3-in. mechanism)  
1: 60mm (with 2-in. mechanism)/60mm (with 3-in. mechanism) \* With guide for 60-mm paper
- 3) Base style**  
0: Horizontal (Mechanism used: LT-2X2XV) / 1: Vertical front-mount (Mechanism used: LT-2X2XH) / 2: Vertical back-mount (Mechanism used: LT-2X2XV)
- 4) Special mechanism**  
No mark: Standard  
A: Thick paper
- 5) Interface**  
PA: Parallel  
RS: Serial  
UB: USB  
(Virtual COM)
- 6) Destination (CG+RS I/F screw)**  
U: US/Europe/Other  
J: Japan
- 7) Sensor (PNE/Black Mark)**  
\* Dual indication permitted.  
No mark: Without sensor  
P: PNE sensor / M1: Black Mark (Left)  
M2: black Mark (Right)
- 8) Maximum paper diameter**  
6: 60mm  
8: 80mm  
1: 102mm
- 9) Direction of paper insertion**  
L: Insert from left (Side without platen open lever) / R: insert from right (Side with platen open lever) / T: Insert from top (Hold both sides, paper diameter fixed at 102mm)
- 10) Paper holder position**  
1: A bit (One hole, toward left)  
2: Standard (2 holes, toward left)  
3: A bit far (One hole, toward right)  
4: Far (2 holes, toward right)