

Smart Mobile Terminal

# SUNMI V3 MIX

MIX, the all-in-one enterprise tablet.

Powered by  
**SUNMI OS**

Compatible with  
**SUNMI DMP**

## MIX your POS terminal to capture businesses anywhere, anytime.

10" high-resolution display and a built-in high speed printer make a mobile and desktop terminal.

## MIX, design not only for payment.

Ergonomically designed for a comfortable grip. Professional scanner integrated 1D/2D barcode scanning. Aluminum-magnesium alloy frame and incell touchscreen make it strong yet slim and light.

\*All Pictures shown are for illustration purpose only, actual product may vary.

## MIX for higher performance.

Qualcomm hexa-core processor and 4GB RAM+32GB ROM for an assured strong performance.

## MIX for wider extensibility.



Specially designed rotatable functional cradle enable cash drawer, handheld scanner and network among other accessories that boost your business.  
\*Both rotatable cradle and non-rotatable cradle options are available.



Built-in high speed  
thermal printer



Professional scanner  
integrated 1D/2D barcode  
scanning supported.



NFC reader



# SUNMI V3 MIX Application Scenario



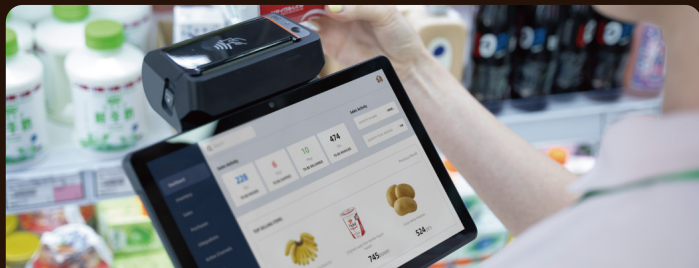
**Tableside Ordering**



**One-on-one Service**



**Drive Thru**



**Inventory Check**

## SUNMI V3 MIX Tech Specs

### General Configuration

<p><b>Product Model</b> T5701 58mm version T5711 80mm version</p>	<p><b>OS</b> SUNMI OS 4.0 (based on Android 13)</p>	<p><b>Processor</b> Qualcomm hexa-core 2.4/2.0GHz</p>	<p><b>Memory</b> 4GB RAM+32GB ROM</p>	<p><b>Display</b> 10.1" HD 1280*800 IPS</p>
<p><b>Battery</b> Removable Lithium battery 7.2V/2600mAh</p>	<p><b>Camera</b> Front 2MP FF QR Payment 0.3MP FF</p>	<p><b>Scanner</b> 2D professional scanner</p>	<p><b>Wi-Fi</b> Supports IEEE 802.11 a/b /g/n/ac 2.4G/5G</p>	<p><b>Speaker</b> 1.2W</p>
<p><b>Bluetooth</b> BT2.1/3.0/4.2, supports BLE</p>	<p><b>Button</b> Power Key, Volume Key and Scan Key</p>	<p><b>GPS</b> GPS, AGPS</p>	<p><b>PSAM Card Slot</b> PSAM Card slot, complies with ISO7816 standard, 1.8V/3.0V</p>	<p><b>SIM Card Slot</b> Dual Nano SIM Card slot, Support 1.8V/3.0V</p>
<p><b>SD Card Slot</b> MicroSD *1</p>	<p><b>Fingerprint</b> Only for login (Optional)</p>	<p><b>Power Adapter</b> Input: AC100-240V, Output: 5V/2A</p>	<p><b>Dimensions (L*W*H)</b> 246*231*73mm</p>	<p><b>Weight</b> 670g(58mm)/710g(80mm)</p>
<p><b>Cradle (Optional)</b> For charging, 3*USB Type A, RJ11, RJ45</p>	<p><b>Cradle Customer Display (Optional)</b> USB 6.7" touchscreen</p>	<p><b>Environment</b> Operating temperature: 0°C~45°C (except 3D camera) Storage temperature: -20°C~60°C</p>		

### 58mm version

### 80mm version

### Printer

Thermal Printer, Print speed: 70mm/s  
Paper Roll Width / Diameter: 58mm/ 40mm

Thermal Printer, Print speed: 70mm/s  
Paper Roll Width / Diameter: 80mm/ 40mm